

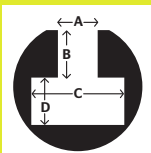
# IMA

## 132 BM

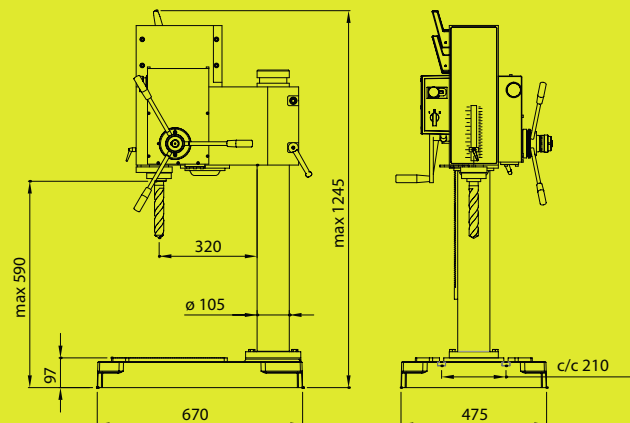
|  |                                  |  |  |   |
|--|----------------------------------|--|--|---|
|  | $\varnothing 30 / 32 \text{ mm}$ |  | <b>50Hz</b><br>75-160<br>265-535<br>440-890<br>1480-3010   | <b>60Hz</b><br>90-190<br>320-640<br>530-1060<br>1790-3610 |
|  |                                  |  |  | 150 mm  |
|  | M18 / M22                        |  | <b>mm/r</b> <b>inch/r</b>  |   |
|  |                                  |  | 0,10                      0,004<br>0,15                      0,006<br>0,22                      0,009<br>0,30                      0,012 |   |
|  | MK 3                             |  |  |   |



185



A 14,5 +/- 0,8 mm  
 B 13 mm  
 C 26 mm  
 D 12 mm



# Tillbehör | 32 BM

Spare parts/Zubehör

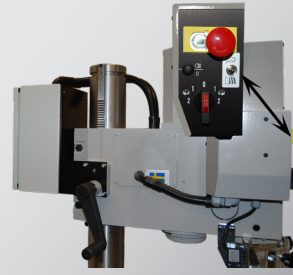
IMA



T25095



T25000



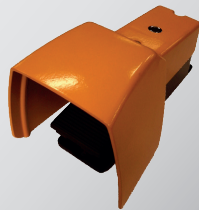
T30001



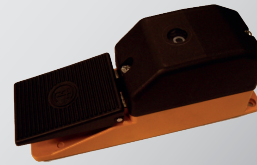
T25003



T30006



T30009



T30010



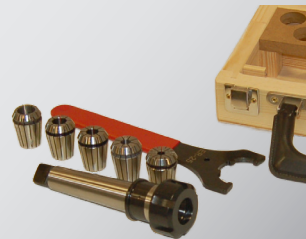
T30016



T30017



T25021



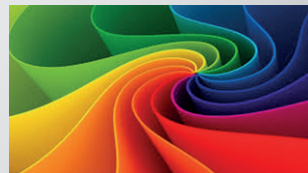
T25U42



T30040 0-13 mm

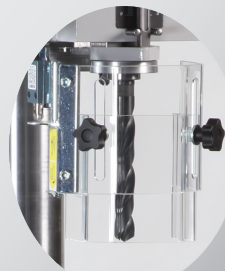


T30041 3-16 mm



TFARGO

Std EU



T25014 + T25052